

Beach-Chair News

- August 2011 -

Annual Publication brought to you by: Marinette County Land & Water Conservation, Marinette County Association of Lakes and Streams, and Beecher and Upper Lake District

Board of Commissioners

Nancy McKenney, Chair Person

801 South Kensington Drive
Appleton, WI 54915
Phone: 920-739-1213
Cell Phone: 920-570-2196
E-mail: Rodmckenney@aol.com

Tracy Kupsh, Treasurer

2050 Swan Point Terrace
DePere, Wisconsin 54115
Phone: 920-983-9780
Cell: 920-660-0918
E-mail: kupshs@gmail.com

Phil Sweet, Secretary

N16763 Beach Road
Pembine, WI 54156
Phone: † 715-324-5050
Cell: 414-975-5104
E-mail: dade138@gmail.com

John Keely, Town of Beecher Board Representative

W6397 County Road Z
Pembine, WI 54156
Phone: 715-324-5361



This Newsletter and other valuable information is available on-line at the Marinette County web site:

www.marinettecounty.com



TABLE OF CONTENTS

2010 Annual Report Minutes	2
Call For Nominations	3
2011 Picnic Announcement	4
Drawdown Progress Report	5
2005/2010 Fish Survey Results	6-7
Treasurer's Report	8
2012 Budget Proposal	9
Message from the Chair	10
Do You Remember When?	11
2011 District Meeting Agenda	12

**The Beecher and Upper Lakes
Public Inland Lake Protection and
Rehabilitation District**

Annual Meeting

- September 4, 2010 -

*Beecher Town Hall
Beecher, Wisconsin*

Welcome by Nancy McKenney, Chairman of the Beecher District was followed by a presentation from Guest Scott Reuss, UW-Extension Horticulture/Agriculture, Marinette County on Oak wilt and Gypsy Moths. Scott is an expert on terrestrial invasive species.

After call to order, agenda for annual meeting was accepted and approved, followed by the reading of the minutes from the September 5, 2009 Annual Lake District and Board of Commissioners Meeting.

Commissioner reports were then provided by the chairman, Secretary followed by the annual treasurers report. Also in attendance were the Beecher Town Board Representative and Marinette County Supervisor Representatives.

Committee report was presented by the Aquatic Plant Committee regarding positive progress on Eurasian Milfoil treatment results on Beecher Lake from spring treatments.

Nominations for 2011 Beecher Lake District Chairman, Secretary and Treasurer were opened. Outgoing Chairman, Nancy McKenney was nominated and nomination was accepted for an additional term.

Secretary, Phil Sweet and Treasurer Tracy Kupsh were to continue in their current terms for 2011.

Floor discussion led by Nancy McKenney, Chairman, on boat launch easement was continued. A fish netting survey report, conducted by Wisconsin DNR in May of 2010 was unavailable and a presentation was expected by the Wisconsin DNR in spring 2011. Additional discussion on insurance coverage was to be continued at a further meeting.

New business included the presentation of 2011 budget by Tracy Kupsh, District Treasurer and was accepted, followed by the election of Chairman for Board of Commissioners for 2011. Nancy McKenney was reelected for a new 3 year term as Chairman at that time. The next meeting was announced for November 6, 2010 and meeting was adjourned. The meeting was followed by a



Photo courtesy of Mike Gotstein

picnic at the Beecher Lake Public Beach.

Respectfully submitted,
Phil Sweet, District Secretary

Call for Nominations

Beecher and Upper Lakes Protection and Rehabilitation District Board of Commissioner

Tracy Kupsch is completing the last year of her term. She has served as the Treasurer for the District during her term. We are so grateful for her expertise and dedication. She has done a remarkable job with managing District finances.

Are you or someone you know interested in serving as a Board of Commissioner for the District?

Who makes up the Board of Commissioners?

The Board of Commissioners is made up of five individuals. Three Commissioners are elected by property owners at the District Annual Meeting and serve 3-year staggered terms (all must be property owners and if possible, one a full-time resident). One representative is from the Town of Beecher Board, and one representative from the Marinette County Board.

How are the officers (Chair, Secretary, and Treasurer) determined?

After elections at the Annual Meeting, the Board of Commissioners meets to determine who will assume the District Chair, Secretary, and Treasurer roles. Commissioners with experience in certain roles may wish to contribute to the District by applying their expertise (example: someone with accounting experience may be the Treasurer). However, no specific occupational experience is required to be a Board of Commissioner.

What does the Board of Commissioners do for the District?

Commissioners meet quarterly to carry out day to day District business with direction provided by property owners during the Annual meeting. The Chair presides at the annual meeting, at all special meetings and meetings of the Board, and at all public hearings held by the Board. The Secretary keeps minutes of all meetings, prepares and sends notices for all meetings. The treasurer is responsible for maintaining district funds, preparing reports, preparing an annual budget, preparing documents for Audit Committee review and certifying tax statements annually to present to the Town of Beecher Treasurer and Clerk.

Roles and duties are carried out in accordance with Wisconsin Statutes Chapter 19 General Duties of Public Officials (includes Open Meetings and Public Records), and Chapter 33 Public Inland Waters.

When and where are the 2011-12 meetings being held?

2011-2012 Meeting Dates

November 5, 2011	BOC
January 21, 2012	BOC
April 28, 2012	BOC
July 21, 2012	BOC
September 1, 2012	Annual
District Meeting	

*Dates have been reserved for the Beecher Town Hall from 9:00 a.m. – Noon unless noted.



Every other Wednesday in Amberg, food is distributed to those in need.

For the past six years, The District has collected non-perishable food items at the annual meeting and donated the items to a local food pantry in Amberg, WI. The donated items are dropped off at Pastor Fred's Food Pantry in Amberg. The building is located next to Mathis Hardware's first store just south of their Warehouses. Donating these items contributes in some small way to support the efforts of the people in the community making a difference in the lives of others. Please remember to bring your non-perishables to the Annual Meeting on September 3rd. Thanks your help and support.

Joe Siudzinski



IN MEMORIAM

LeRoy S. "Steve" Dill

**Born in Iron Mountain, Michigan
on Jun 28, 1944**

**Died on May 28, 2011 and resided in
Pembine, Wisconsin**

The Beecher and Upper Lake District was shocked and deeply saddened to learn that Steve Dill passed away unexpectedly on May 28, 2011. Steve Dill served as the Marinette County Board of Supervisors representative on the Beecher Lake Board of Commissioners for many years. We will miss his dedication, wisdom, and gentle guidance. Our hearts go out to his family, friends, and the community that he loved and served.

Annual Picnic

Date: September 3, 2011

Time: Anytime after noon

Place: Public Beach

Save the date, September 3, 2011, for our annual picnic. We will start the picnic (across from the Beach on Beecher Lake) at approximately 12:00 PM right after the annual meeting. The annual meeting starts at 9:30 AM and will be held once again at the Town Hall. If you haven't seen the town hall it looks great and now has bathrooms for our use.

This years picnic will include a raffle (no auction this year) and that means we need any 'Cabin Treasures' you are willing to pass on and your purchased or handmade donations to make our raffle a success. We have decided to sweeten the pot for the 'Cash Drawing' as long as the raffle is successful. This year the profits from our raffle will go toward the general funds that include future Gypsy Moth spraying, weed control and the lakes draw down.

Things to bring to the picnic :

- some can goods for our annual food drive to help fill the shelves of the Food Pantry.
- your own plates, forks, spoons and knives
- a dish to share - along with a favorite dessert
- cash for the raffle
- and ideas for next years picnic.

We would like to thank Cindy and Fritz Schmeisser for their help in the past for providing our patron donations.

See you at the picnic.

Phil & Pam Sweet, Lori & Tom Beringer
and Donna & John Fiel



Beecher and Upper Lake Drawdown Progress Report

The Aquatic Plant Committee is back and starting earlier this year due to what we learned from the 2010 attempt or as we kept saying to ourselves-“everything was going well until six inch rain event in Late September-the water was actually flowing in from Beecher Creek faster than we could siphon it out! A dry hot Fall would be advantageous to the team followed by an Early Freeze Up.

So-what are we doing differently? The Aquatic Plant Committee has decided on a start date of August 27th which is 14 days earlier than 2010. We're reviewing some other strategies in order to get the drawdown completed by Mid-October which is required and allows the turtles, frogs, crustaceans to hibernate prior to freeze-up. We anticipate

35 days to drawdown the lakes and will use a pump/generator system to keep the water at Bay to freeze-up, the best we can.

A hard freeze with limited early snowfall are conditions that will allow us to be most successful with milfoil control. What can you do to help in these activities? “Observe and Watchdog” the siphons for proper functioning and both work-sites for proper behavior by the public and continue to support your Lake District as you have done in the past both financially and with your skills and time.

2012 committee work will consist of monitoring the lakes for 2011 project results and putting together a cost estimate and timeline for long-term dam modifications to perform a drawdown mechanically and eliminate some of the chemical treatment of Eurasian Milfoil in future years and help take some of the weather issues out of the drawdown equation. Our Reserve Fund in the Treasurers Report reflects those long-term goals.

As always, we would like to thank Chuck Druckrey and Marinette County Land and Water Conservation Department along with the WDNR experts that help offer their skills and expertise to keep our Water Quality and Lake Eco-system naturally pristine.

Jane Devine, Mike Gotstein, Doyle Curtis, Joe Siudzinski

The Beecher Lake Protection and Rehabilitation District: Aquatic Plant Committee Meeting Notification

PUBLIC MEETING NOTICE:

August, 27th, 11:00 AM

Meeting Location:

Beecher and Upper Lake Spillway (Dam)
Dam Road
Beecher, WI 54156



Agenda:

- Review Siphon Setup with interested community members and landowners
- Public Input-Siphon Start Date-Scheduled to begin August 27th
- Committee Discussion and Final Decision on Siphon Start Date
- Path Forward-Fall 2011 Siphon Planning

Committee Members:

Joe Siudzinski, Doyle Curtis, Chuck Druckrey, Mike Gotstein, Jane Devine

Beecher Lake



Chip Long – Fisheries Biologist
Marinette & northern Oconto Counties
WDNR Peshtigo Service Center
Christopher.Long@Wisconsin.gov



July 23, 2011

Marinette & Oconto Counties

- Lakes**
 - High Profile => 1000 ac (4 yrs)
 - Public Access = 100 – 1000 (8 yrs)
 - Minor Fishery = < 100 ac (10-15 yrs)
- Trout Streams**
 - Class 1** = natural reproduction
 - Class 2** = some natural reproduction
 - Class 3** = no natural reproduction
- Marinette: 442 = 13,735 ac**
- Oconto: 378 = 11,053 ac**
- Total = 820 lakes / 24,788 ac**
- High Profile = 4 lakes**
 - White Potato Lake
 - Lake Noquebay
 - Caldron Falls
 - High Falls
- Marinette: 196 = 626.4 mi**
- Oconto: 112 = 297.7 mi**
- Total = 924.1 miles**
 - Class 1 = 69%
 - Class 2 = 20%
 - Class 3 = 11%

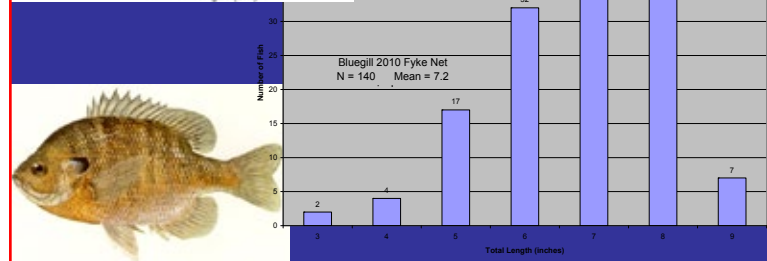
Beecher Lake Survey Summaries

Different species & different sizes of fish recruit to different sampling gear

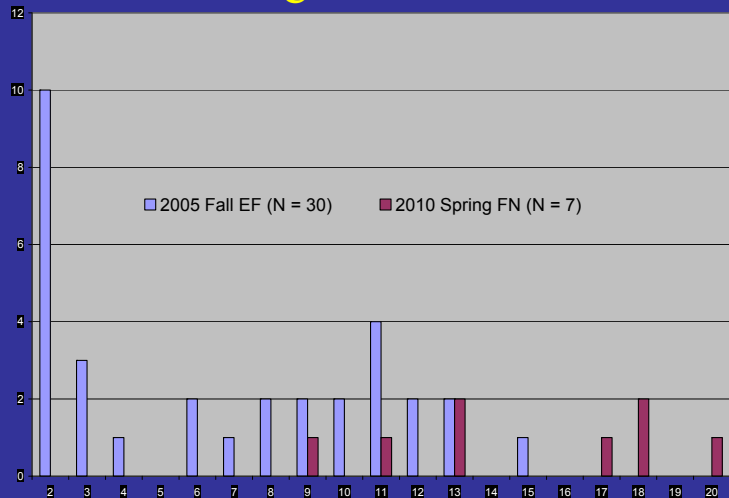
- 2005 (September 16)**
 - Fall electrofishing
 - Species (#); length range
 - BLG (70); 1.7 – 6.9
 - LMB (30); 2.0 – 15.5
 - PKS (28); 2.3 – 7.1
 - YEP (17); 2.3 – 5.4
 - YEB (1); 9.2
 - BLC (1); 2.4
- 2010 (May 18 – 21)**
 - Spring fyke netting
 - Species (#); length range
 - YEB (148); 8.0 – 13.1
 - BLG (140); 3.7 – 9.5
 - NOP (25); 13.1 – 23.2
 - BLC (21); 4.8 – 12.3
 - PKS (10); 3.9 – 7.2
 - LMB (7); 9.9 – 20.2
 - BRB (1); 12.8



Length Frequency



Largemouth bass



Stocking Fish

- In most instances, good fishing is not the result of stocking.
- Stocking is often only a temporary fix to a much larger problem (i.e. bluegill, perch).
 - Due to the reproductive potential and the abundance of spawning habitat in most waters, panfish stocking is often unnecessary except in very few circumstances (i.e. winterkill).
- Stocking can be an important management tool, if used properly (i.e. walleye).
- Enhancing fish populations by stocking without consideration to the available habitat is counter-productive.
 - Habitat enhancement provides a better return on your investment (i.e. vegetation, in-lake habitat, shoreline).

BEAUCHAIR LAKE FISH SURVEY RESULTS

Stocking Fish

- Reasons to stock fish
 - Reasons not to stock fish.
- | | |
|---|--|
| <ol style="list-style-type: none"> 1. Fish kill (winter kill). 2. Control of undesirable / overabundant species. 3. Maintain fishable population incapable of maintaining adequate level of natural reproduction (poor recruitment). | <ol style="list-style-type: none"> 1. Population present and capable of natural reproduction. 2. New introductions. 3. Transfer of exotic species. 4. Sustainability of program. |
|---|--|

Beecher Lake Stocking History

Year	Species	Number Stocked	Avg Length (IN)
2003	FATHEAD MINNOW	290	3
2003	GREEN SUNFISH X BLUEGILL	895	5
2008	FATHEAD MINNOW	300,000	1

- When panfish species (BLG, BLC, YEP) are present, it is not necessary to stock forage fish.
- Panfish are prolific spawners.
- Predation on panfish improves growth by reducing competition.

Hybrid Sunfish



- Offspring 85 – 95 % male
- Offspring are not hybrids – bluegill and green sunfish
- Stocking hybrid sunfish into an existing population is not recommended.

Aquatic Vegetation Management

- Aquatic vegetation;
 - Provides a food source for some animals
 - Provides habitat / cover for small / juvenile fish
 - Removes carbon dioxide
 - Produces oxygen through photosynthesis



Aquatic Vegetation Management



- Too much vs. too little vegetation
 - Overabundant vegetation can;
 - Inhibit the ability of predators to find and capture prey
 - Lead to the stunting of panfish
 - If vegetation is too sparse;
 - Limited food production / habitat for invertebrates
 - Poor recruitment / survival of most fish species

Recommendations

- Stocking – Not necessary
- Habitat – introduction of woody debris
 - Tree drops
 - Fish Cribs – goal should be 1 crib / acre of water
 - Over a 5-year period
- Limit shoreline development
 - Preventing erosion reduces nutrient inputs
 - Vegetative buffer along shoreline
 - Re-establish terrestrial / wetland vegetation
 - » Uptake before nutrients enter the lake
 - » Reduces shoreline erosion by wind / wave action
 - » Often localized on windy shorelines
- Non-phosphorus fertilizers...

Beecher and Upper Lake Protection and Rehabilitation District Association

August 10, 2011

Treasurer's Report

Dollar Amount

Income Summary

Beginning Balance - Sept 2010 (per 8/16/2010 bank statement)		\$6,408.11
Labor Day Picnic Fundraiser - 2010	\$1,110.00	
WDNR - AEPP 138 08 Beecher Lake AIS	\$6,184.86	
Town of Beecher Tax Collections 2009 & 2010	<u>\$10,680.56</u>	
Total Income		\$17,975.42

Expenditure Summary

Aquatic Committee (Siphon Expense)	(\$2,774.85)	
Supplies	(\$189.66)	
Liability Insurance	<u>(\$194.00)</u>	
Total Expense		(\$3,158.51)

Current Funds On Hand (ties to 7/15/11 bank statement) \$21,225.02

2011 Forecasted Activity

Income		
Outstanding Taxes from 2009	(\$0.00)	
Outstanding Taxes from 2010	\$313.78	
Expenses		
Office Supplies	(\$200.00)	
Habitat Improvement/Aquatic Committee	(\$1,000.00)	
Misc Supplies	(\$100.00)	

Estimated 2011 Year End Balance \$20,238.80

<u>Reserve Funds *</u>	<u>2011 Year End Reserves</u>
Aquatic Committee 2011 Expense and reserve	\$11,250
Gypsy Moth Reserve	\$3,000
Attorney Fees - Easement Reserve	\$1,000
Habitat Improvement/Fish Stocking Reserve	<u>\$2,000</u>
	\$17,250

** Reserve Funds can not be spent without a BOC approved committee plan and budget. Depending on requirements, funds can be shifted between reserves at the discretion of the BOC.*

Respectfully Submitted,

Tracy Kupsh
Treasurer - Beecher and Upper Lake Protection & Rehabilitation District Association

Beecher and Upper Lake Protection and Rehabilitation District

2012 Proposed Budget

	<u>2012 Estimate</u>	<u>Estimated Assessment</u>						
Aquatic Plant Control	\$9,500							
Dry Terrain Disease Control (Gypsy Moth, etc..)	\$1,000							
Habitat Improvement	\$1,000							
Legal Fees	\$500							
Newsletter & Meeting Notice Expense	\$400							
Storage Facility	\$480							
Picnic Costs	\$400							
Insurance Premiums	\$1,000							
2011 Estimated Operating Costs	\$14,280							
Estimated 2011 Year End Balance less 2011 Reserves	\$2,989							
Picnic Fundraiser/Donations (estimate 75% of 2010)	\$833							
2011 Carry forward		\$3,821						
Net Funds Required		\$10,459						
<table border="0" style="width: 100%;"> <tr> <td style="width: 80%;">Funds Required</td> <td style="text-align: right;">\$10,459</td> </tr> <tr> <td>Assessed Units</td> <td style="text-align: right; border-top: 1px solid black;">68</td> </tr> <tr> <td>Estimated Tax Assessment per Unit</td> <td style="text-align: right;">\$154</td> </tr> </table>			Funds Required	\$10,459	Assessed Units	68	Estimated Tax Assessment per Unit	\$154
Funds Required	\$10,459							
Assessed Units	68							
Estimated Tax Assessment per Unit	\$154							

<u>Reserve Funds *</u>	<u>Reserve</u>	<u>Proposed 2012 Additions</u>	<u>Total Proposed Reserve Balance</u>
Aquatic Committee 2012 Expense and Spillway Reserve	\$11,250	\$9,500	\$20,750
Dry Terrain Disease Control (Gypsy Moth, etc..)	\$3,000	\$1,000	\$4,000
Habitat Improvement	\$2,000	\$1,000	\$3,000
Attorney Fees - Easement Reserve	\$1,000	\$500	\$1,500
	\$17,250	\$12,000	\$29,250

** Reserve Funds can not be spent without a BOC approved committee plan and budget. Depending on requirements, funds can be shifted between reserves at the discretion of the BOC.*



Message from the Chair 2011

Dear District Property Owner:

On behalf of the Beecher and Upper Lakes Public Inland Lake Protection and Rehabilitation District Board of Commissioners thank you for your support and guidance at the 2010 Annual meeting. The Annual meeting directs the work of the District Board of Commissioners and Committees throughout the year. District property owners meet to weigh in on important issues, provide guidance, vote on the budget, and elect new Commissioners. Please plan to attend the Annual District meeting on September 3, 2011, at the Beecher Town Hall from 9:30 – Noon to set the direction for the coming year. The Beecher and Upper Lake District Picnic will follow at the Beecher Lake Public Beach.

This year, several changes affected our District. Most recently, the Beecher and Upper Lake District was shocked and deeply saddened to learn that Steve Dill passed away unexpectedly on May 28, 2011. Steve Dill served as the Marinette County Board of Supervisors representative on the Beecher Lake Board of Commissioners for many years. Our hearts go out to his family, friends, and the community that he loved and served. It was a privilege to know and work with Steve. We will miss his dedication, wisdom, and gentle guidance.

This year, John Keeley replaced Clancy Whiting as Beecher Town Board Representative after fall elections. Clancy Whiting served the District in this capacity for many years. We appreciate his dedication and service. I'd like to recognize and thank District-elected officials: Tracy Kupsh, Treasurer, who is in her 3rd year of a 3-year term and Phil Sweet, Secretary, who is in his 2nd year of a 3-year term. The Board has convened quarterly this year to monitor and manage the budget, consider changes to insurance, and consider a request to detach from the District. Three District property owners have agreed to serve on the District Boundaries and Detachment Ad hoc Committee, (Mike Giese, Marcia Miracle, and Robert Magnuson). This ad hoc committee was formed to advise the Board of Commissioners.

Due to heavy rain, the draw down to control Eurasian Milfoil was not successful last fall. However, the Aquatic Plant Committee, Joe Siudzinski, Jane Devine, Mike Gotstein, Randy Stradal, and Doyle Curtis, continue to work with Chuck Druckrey, CLM, Marinette County Water Resource Specialist to plan for a draw down this fall. You may recall that they have secured a grant for the District from the Wisconsin Department of Natural Resources. The total project cost is \$30,088.00. The grant will fund \$22,522.00 and the District share is \$7,522.00 in donated labor and equipment.

The District continues to benefit from resources provided by the Town of Beecher, Wisconsin Department of Natural Resources (DNR), and Marinette County. Chuck Druckrey continues to work closely with the Aquatic Plant Committee; the Town of Beecher reserved the new Town Hall for all four Board of Commissioner meetings; Christopher (Chip) Long, Inland Fisheries Biologist for the WI DNR presented results of the 2010 fish survey on Beecher Lake, providing us with information for fish management decision-making. This information will be distributed at the annual meeting.

I'd also like to recognize and thank the Beecher Lake Newsletter Editors and Committees. Thank you to Helen and Doyle Curtis, who publish the annual newsletter (Beach Chair News). In addition, with the help of Tim Nolan and Rodger Kupsh they have repaired the Beecher Lake sign. The Picnic Committee, led by Lori and Tom Beringer and Pam Sweet are busy making arrangements for a fun and enjoyable Beecher and Upper Lake District Picnic.

It continues to be a privilege to serve the District with incredibly talented and dedicated individuals. If you have a desire to join a Committee or serve as a Board of Commissioner, please contact any of the Board Commissioners or Committee members.

I look forward to seeing you at the Annual District meeting.

Sincerely,

Nancy McKenney

Nancy McKenney, Chair, Board of Commissioners
The Beecher and Upper Lakes Public Inland Lake Protection and Rehabilitation District

Do you remember when?

The majority of property owners on Beecher and Upper Lakes have little or no memory of when Dam Road washed out on May 30, 1970. Fortunately, Howard Demro whose property is on the south shore of Upper Lake, documented this turbulent period with his photographs. A special thanks to David Demro for submitting the photos.



◀ The Demro dock and water levels in the summer of 1969.

▶ May 30, 1970 after approximately 60 feet of Dam Road washed out. The car in the distant background is where the old dam is located.



◀ Water level on Upper Lake at the time of the washout on Dam Road (summer 1970).

▼ With the new dam in place the water level is shown in this picture. It is believed that the normal level for Beecher and Upper Lake is 18" lower with the new dam (summer 1975).



◀ Our current dam under construction.





Annual Meeting Agenda

Saturday, September 3, 2011 9:30 AM

Beecher Town Hall

Photo courtesy of Mike Gotstein

AGENDA	
9:30	1. Call to Order
9:30-9:45	2. Approval of Agenda
9:45-9:55	3. Reading of Minutes <ul style="list-style-type: none"> • September 4, 2010 Annual Lake District and Board of Commissioners Meeting
9:55-10:20	4. Commissioner Reports <ul style="list-style-type: none"> • Chairman Report • Secretary Report • Treasurers Report • Beecher Town Board Representative • Marinette County Supervisor Representative (if present)
10:20-10:45	5. Committee Reports <ul style="list-style-type: none"> • Aquatic Plant Committee • Nomination Committee • District Boundaries and Detachment Ad Hoc Study Committee
10:45-11:00	6. Unfinished business <ul style="list-style-type: none"> • Easement • Fish Netting Survey • Beecher Lake Insurance Information
11:00-11:25	7. New business <ul style="list-style-type: none"> • 2012 Budget • Board of Commissioners Election
11:25-11:30	8. Announcements <ul style="list-style-type: none"> • Next Meeting November 5, 2011 at the Beecher Town Hall (9:30-noon) • Picnic at the Beecher Lake Public Beach
11:30	10. Annual Meeting Adjournment
11:30-noon	11. Open Forum - District Property Owners

**Note: The Board of Commissioners reserves the right to take agenda items out of order and adjust time frames to facilitate District business.*

Thank you for your participation.